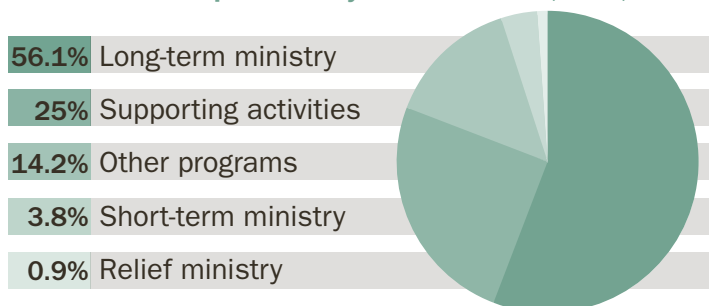


Eastern Mennonite Missions

had **134** workers serving in **36** countries in **2019** 12 countries (within shaded areas) are not named for security reasons



Total 2019 expenses by function: \$6,265,569



111 Long-term workers

23 Short-term workers

583 Missionary Support Team members on 73 teams

35 Staff (24 full-time and 11 part-time)

12 Board members (who served at any point in 2019)

A year in review

EMM has over 100 years of faithful ministry built upon the foundation and spiritual legacy of many men and women who served the Lord and sought to do His will both here and around the world. Our vision, mission, core values, and focus on making disciples — all found in our vision booklet called *A Garden in Spring* — chart a forward-moving course. This is a wonderful vision, and our commitment was, and is, to see it carried out to the extent God gives us grace.

In 2019, we desired to stay the course at EMM. There were, and are, many distractions that can take our eyes off of fulfilling the Great Commission. The world desperately needs to find hope, peace, and salvation in the Creator of the universe. EMM desires to stay the course in our determination to share the good news of Christ! From an international church of immigrants in Germany to house churches in Chile to a hospital in Sierra Leone, EMM workers are spreading the love of Christ wherever they serve.

Read more in EMM's 2019 annual report online or have it mailed to you by contacting Nancy Ranck at nancy.ranck@emm.org or 717 898-2251 ext. 204.

EMM.ORG/ANNUALREPORT

EMM

everyone moving in mission

53 W. Brandt Blvd • PO Box 458
Salunga, PA 17538-0458 USA
717 898-2251 • Fax 717 898-8092
emm.org • info@emm.org

Cultivating Life, Together

We are grateful for all the ways the congregations of LMC connect with Landis Communities. As a Resource Partner ministry with LMC we have one goal in mind—to serve more people across a wider range of needs and economic conditions through new ventures and creative partnerships. We recently reaffirmed our vision of enriching lives through our mission of “following God’s call to creatively serve the diverse needs and interests of older adults by developing opportunities and collaborative relationships.” We are guided in these efforts by the values of joy, compassion, integrity, stewardship, and community. These values can be arranged into the acrostic “Jesus Christ In Street Clothes.”



Over this year of bountiful growth, board and team members have cultivated existing programs, planted seeds for new efforts, and collaborated with others to develop new shared ministries. A team member illustrated this important point, noting, “Ever since our organization began, we have been sweeping floors. The kinds of tools we use have changed dramatically in some cases, but we continue to sweep the place clean as we serve others.” In all we do, as we grow and expand, Landis Communities cultivates abundant choices for older adults, wherever they call home.

Landis Communities is one organization with three distinct parts: continuing care retirement communities, home and community-based services, and quality living options that are affordable to all. During the course of this year, we began to formalize the structure for these areas and established a strong centralized services team to provide support to all of these efforts.

Landis Communities and our affiliates are also happy to share our new visual identity. The logo is in the shape of a flourishing and fruitful tree. With its roots and trunk comprised of human figures, this tree communicates that Landis Communities is more than a series of buildings—it is a fellowship of individuals working together to build and sustain life-giving value. The figures are reaching upward, both in an action of cultivation or pruning, but also to enjoy the rich fruit of the bountiful tree. The leaves are separate, but connected by shape and proximity, emphasizing the way Landis Communities is sustained by diversity and community partnerships. All of the logos in our organization grow from this image.

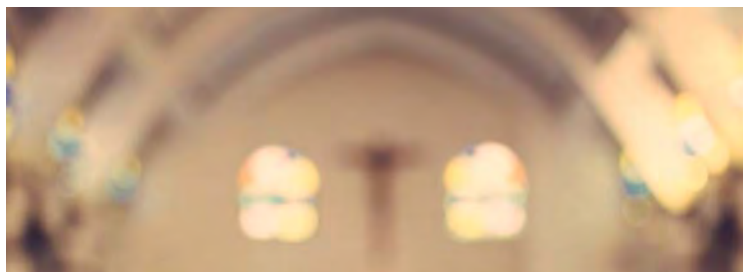
If you are interested in sharing your gifts of music, sewing, or companionship, etc. with others, contact the Landis Homes Volunteer Office at 717-509-5409 or visit www.landishomes.org/volunteer/ or the Welsh Mountain Home Volunteer Office at 717-355-9522 or see www.welshmountainhome.org/volunteer-opportunities-at-welshmountain-home/.

1001 E Oregon Road • Lititz, PA 17543
(717) 381-3500 • LandisCommunities.org

Landis 
Communities

MEMORY LOSS SUPPORT GROUP

meets the last Tuesday of each month. For more information, contact Landis Homes at (717) 581-3939. The Parkinson's Support Group meets the third Monday of each month from March through November. For more information, call 717-509-5494. No Longer Alone Family Support Group provides a place for those who have a loved one living with mental illness, to learn and share their experiences. Meets the 4th Sunday of every month, 3-5 pm. *Call Landis Communities at 717-381-3500.*



The Annual Clergy Breakfast will be held May 14 from 7:30-9AM at Landis Homes. Carol Gingerich, LCSW, from The Counselors at Groffdale, will be sharing on walking with families in crisis when a loved one is passing. RSVP by May 10 to 717-381-3526 or LGuengerich@Landis.org.



Landis

Children's Learning Center

Visit <http://bit.ly/lhclc> or call 717-509-5400.



Landis

at HOME

Thrive at home with Landis At Home! Call 717-509-5800 or visit LandisAtHome.org.

SPEAKER'S RESOURCE LISTING

provides resources for people available for church and community groups on a variety of topics. For more information, contact Larry Guengerich at 717-381-3526 or LGuengerich@Landis.org.



Landis

Adult Day Services

ENRICHING EACH DAY TOGETHER!

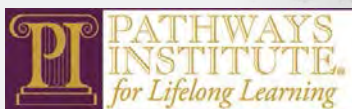
Call 717-581-3939 or visit LandisAdultDay.org



Landis Adult Day Services BENEFIT GOLF OUTING

• JUNE 5, 2020 •

For more information, call 717-509-5490 or visit LandisAdultDay.org.



There are lifelong learning opportunities for all who are age 55+ at Pathways Institute. Visit <http://bit.ly/LancasterPathways>.



On FELLOWSHIP DAY, Sept. 12, there will be a benefit live auction, a silent auction, a yard sale, BBQ chicken, food court, and children's area at Landis Homes. Visit LandisHomes.org or call 717-569-3271.



*Commit your work to the
Lord, and your plans will
be established.*

– Proverbs 16:3 (NRSV)

Invest in what lasts

Everence 2020 report

LMC

Celebration of Church Life

April 3-4, 2020

Strong church partnerships a vital part of Everence mission

Everence® works closely with churches and their members, as we have since our organization started as Mennonite Mutual Aid in 1945.

We're celebrating our 75th anniversary in 2020 – three-quarters of a century of helping brothers and sisters in Christ “build up the common life” through decisions about their money and other resources.

We look forward to many more years of helping your church members create and implement plans tailored to their needs and their goals to share with others.

We value our connections and will continue to serve the faith community as partners in stewardship throughout 2020 and beyond.

Pastoral Financial Wellness Program extends its reach



Everence expanded our Pastoral Financial Wellness Program in 2019 to credentialed and active

pastors from more than 30 affiliated Anabaptist and like-minded denominations and church networks.

A second \$1 million grant from Lilly Endowment Inc. – through its National Initiative to Address Economic Challenges Facing Pastoral Leaders – helped make widening the program possible.

“Hopefully, through our expanded program, we can help more pastors find a healthy financial balance so they can continue following their calling in the ministry,” said Beryl Jantzi, D.Min., Everence Stewardship Education Director.

The program includes direct financial assistance grants, financial education events and subsidies for financial planning. More details are available at everence.com/pastoral-financial-wellness.

Is church management software right for you?

A new resource from Everence can help you decide whether your church needs church management software for organizing and automating certain tasks.

Hundreds of options are available to help churches with:

- Membership management.
- Contributions/donor management.

- Accounting.
- Event/facilities management.
- Communications and outreach.
- Volunteer management.

Everence doesn't endorse any specific software in our new guide, *Church information management systems*, but we do identify some of the possibilities. Consider it a starting point for exploring your options.

Visit everence.com/resources/church-finance-manual and look under “additional resources” to download your own copy.

Take advantage of new webinars for churches



Everence is offering your church new educational webinars in 2020.

They are designed as an easy-to-share stewardship education resource for pastors and others in your church.

Talk to your Everence stewardship consultant to make sure you're on the mailing list for invitations to these webinars.



Impacting the World with Capabilities

1149 East Oregon Road, Lititz, PA 17543 | 717.656.2466 | 717.656.0459 Fax
FriendshipCommunity.net | FriendshipART.net  



A Panoramic View of 2019 ...by *Friendship Community* CEO, Gwen Schuit

2019 was a faith filled year of *Collaboration* and *Unity* for our entire Team of people associated with each Individual and Team Member! With the challenges of recruitment due to a growing economy with little unemployment and a lack of State Funding, we partnered with many people to make a difference and care for those we support with a variety of needs. We hired a Talent Acquisition Facilitator to recruit the best talent for all needed positions with a focus on Direct Support Professionals.

New Regulations were announced, after 5 years of veracious debate with State Government officials, that will change the way that we operate at Friendship Community. It is an ever changing Human Services industry with more complex healthcare needs than ever before. As we intentionally listen to our Individuals, families and Team Members, we continue to strive for Continuous Quality Improvement in supporting everyday lives and focusing on the capabilities of those that we support and those who provide that necessary support and care.

Friendship Community was invited by Lancaster Newspapers (LNP) to participate in Lancaster County's first annual **Best Workplaces** program. In September 2019, employees from a variety of organizations across Lancaster County participated in the anonymous survey. LNP collaborated with Lancaster SHRM, Pennsylvania Career Link, Tristarr Staffing, Monster.com and Data Joe to create and administer the Team Member survey and provide the results to the participating employers. The goal was to work together as a team to make our community a better place to work. The Executive Team at Friendship Community had just decided to survey our Team Members' satisfaction. We thought this was a seamless way to utilize a valid tool for thoughtful results and a valuable opportunity to participate in a greater community effort to better the entire County.

In December, we were quite surprised to learn that ***Friendship Community had placed 3rd in the Large Business category!*** We were honored and pleased to accept this wonderful award and excited to learn how we can become the Best Employer we can be! We learned that our Team Members believe that this organization operates with strong values and ethics and is going in the right direction and has confidence in the leadership. They feel genuinely appreciated and would highly recommend working for Friendship Community and they feel like that they are part of something meaningful. We also learned that our Managers are trust-worthy with their communication and care about Team Members and their concerns and that our Team believes that our Organization is socially responsible and provides as much ongoing training as our Team Members need. This is a fraction of the results, but each one is important to us as we strive to continue to grow, serve others and make a positive impact in this world.

We continue to nurture a culture of mentoring, coaching and growing that has positively changed our organization. Friendship Community is passionate to provide innovative services for people with Intellectual Disability and Autism well into the future. We so appreciate all of those who have partnered with us and offered support!



Join us for... **FEST**
Saturday May 9, 7am – 2pm
Friendship Community Main Campus
FriendshipCommunity.net/events





Resources for faith formation and leadership development

Academic programs

AMBS serves the church as a learning community with an Anabaptist vision, educating followers of Jesus Christ to be leaders for God's reconciling mission in the world. Our programs integrate academics, spiritual formation and practice. Join us — whether in person or at a distance — and deepen your understanding of Scripture, faith and Anabaptist theology!

- **Study at a distance**
 - **Master of Divinity Connect** (online and hybrid courses)
 - **Master of Arts: Theology and Global Anabaptism** (fully online)
 - **Graduate Certificate in Theological Studies** (fully or partially online; customizable)
- **Study on campus**
 - **Master of Divinity Campus**
 - **Master of Arts in Christian Formation**
 - **Master of Arts: Theology and Peace Studies**
 - **Graduate Certificate in Theological Studies**
ambs.edu/academics
- **Financial aid:** AMBS offers generous need-based financial aid, grants and scholarships to help make your education affordable. ambs.edu/financialaid
- **Want to explore seminary study?** Take an online, campus or hybrid class, even if you're not yet admitted to AMBS, and your first class is 50 percent off! Check out our upcoming offerings: ambs.edu/onecourse
- **Experience AMBS:** Visit our campus to learn more about all that AMBS has to offer. ambs.edu/visit

Center for Faith Formation and Culture

- **!Explore: A Theological Program for High School Youth:** Students in grades 10–12 can explore ministry and theology, grow in spiritual practices and listen for God's call through a summer congregational internship and a Group Experience (June 30 – July 16, 2020). Participants receive a \$1,000 stipend. Tap a shoulder!
ambs.edu/explore

AMBS statistics

- In 2019–20, AMBS's graduate student body included 58 U.S. students, eight Canadian students and 22 international students.
- The 2019 graduating class comprised 13 men and seven women from nine countries on five continents. Nine of the graduates completed at least part of their seminary studies at a distance.
- In 2019–20, 24 students are enrolled in Journey in Canada, Southeast Asia, Tanzania and the U.S.

We thank God for your support and ask for your prayers as we prepare leaders for the church through programs that are biblically, spiritually, ethically and theologically grounded.

Lifelong learning

AMBS's Church Leadership Center offers various nondegree options for you to continue your education and strengthen your leadership skills:

- **Online short courses:** Join the forum discussions in these annual six-week online courses and dig into Anabaptist history, thought and witness. No grades, no papers!
 - Exploring Anabaptist History and Theology
 - Exploring Peace and Justice in the Bible
 - Understanding Anabaptist Approaches to Scripture
 - Transforming Congregational Conflict and Communicationambs.edu/shortcourses
- **Pastors and Leaders 2021** (March 1–4)
- **Leadership Clinics** (March 1, 2021)
ambs.edu/pastorsandleaders
- **Journey: A Missional Leadership Development Program:** This undergraduate-level nondegree program offers mentor-mentee partnerships, distance-learning opportunities and community support. ambs.edu/journey
- **Invite AMBS!** Faculty and staff are available to come to you and speak on a variety of topics, including intercultural competence and undoing racism, Reading the Bible with Jesus workshops, improvisational leadership, healthy boundaries and more. ambs.edu/invite
- **Spiritual Direction Seminars:** Cultivate your ministry of spiritual direction through this supervised program. ambs.edu/seminars

Reader Responses

Arlington, TX – “The luxleather journal *Names of Jesus* has impacted my life and helped strengthen my faith in my Lord and Savior Jesus Christ. Praise be to God!”

Clinton, MD – “This little book, entitled, *Let Not Your Heart Be Troubled*, has been a true blessing in this season of bereavement that I am currently in. As I began to read, I truly felt the heaviness lift up off of me. The section that truly set me on fire, and I felt I was on my way back from the deep despair I was feeling was the section simply entitled, ‘Help’ and it could not have come at a better time.”



We Welcome Your Support

You may get involved by:

PRAYING

VOLUNTEERING

label books, warehouse work

GIVING

charitable contributions including
CB Charitable Gift Fund available through
Mennonite Foundation and MB Foundation

ADOPTING A DISPLAY

keep a display near your home neat and
organized between display servings

**Contact the Choice Books Distributor
nearest you or send an email to
info@choicebooks.org**

Choice Books Regional Distributors

Choice Books of Great Lakes

10154 Rosedale-MC Road, Irwin OH 43029
Phone: 888-809-1368 • Email: info@gl.choicebooks.org

Choice Books of Gulf States

6115 Old Pascagoula Road, Theodore AL 36582-9166
Phone: 877-598-7759 • Email: info@gs.choicebooks.org

Choice Books of Kansas

4405 South Whiteside Road, Hutchinson KS 67501-9062
Phone: 888-201-6268 • Email: info@ks.choicebooks.org

Choice Books of Northern Virginia

10100 Piper Lane, Bristow VA 20136-1419
Phone: 800-827-1894 • Email: info@nv.choicebooks.org

Choice Books of Pennsylvania

121 S Main Street, Manheim PA 17545-1601
Phone: 877-224-1114 • Email: info@pa.choicebooks.org

Choice Books of West Coast

856 S Reed Ave., Suite 10, Reddley CA 93654
Phone: 888-401-2404 • Email: info@wc.choicebooks.org



In 2019, Choice Books of Midwest (CBMW) agreed to transfer ministry assets and liabilities to Choice Books of Kansas, which is now overseeing continued servicing of former CBMW displays in Minnesota, Wisconsin, Iowa, Illinois and parts of Michigan and Missouri. This merger of regional distributors strengthened CB's ability to achieve the mission of sharing the Good News of Jesus Christ in partnership with current and future retail partners in all of these areas. Please pray with us for effective outreach as we move through this transition!

4th Quarter 2019

CHOICE BOOKS



Quarterly Chronicle

Reading to enrich your life

963 Reservoir St, Suite 200, Harrisonburg, VA 22801
Phone: (540) 434-1827 • Fax: (540) 434-9894
info@choicebooks.org
www.choicebooks.org

Facts and Figures from 2019

Choice Books sold 5,392,835 books in 2019, at least 245,018 more lives touched over the previous year. Annual sales have exceeded 5 million books for the last 14 years. In addition, sales of non-book items (i.e., Bible covers, boxed blessing cards, book marks, keyrings, etc.) were 416,895 units for the year, down by only 24,122 units.

Choice Books ended the year with nearly 10,700 permanent displays in retail locations nationwide. Distributors removed many low performing displays this year, decreasing servicing expenses while increasing attention to displays with the most impact. Overall, sales have remained steady, though the permanent display count is down by 600.

Monthly Book Sales

Jan.	509,308	Feb.	556,800	Mar.	420,532
Apr.	465,425	May	414,865	June	364,296
July	463,214	Aug.	424,243	Sept.	489,816
Oct.	400,891	Nov.	455,232	Dec.	428,213



Top 10 Titles

<i>Too Blessed to Be Stressed Devotions for Women</i> by Debra Cary	80,151
<i>Keep Calm and Trust God</i> by Jake & Kalish Francine	70,661
<i>Rose Book of Bible Charts, Maps & Time Lines</i>	68,790
<i>Prayers & Promises for Women</i>	57,747
<i>Grandma Kints</i> by Laura Maxwell	53,585
<i>Laugh-Out-Loud Jokes for Kids</i> by Hank Ellison	46,261
<i>Brain Games Large Print Bible Word Search</i>	45,350
<i>The Complete Guide to the Bible</i> by Stephen M. Miller	42,518
<i>Psalms in Color—Adult Coloring Book</i>	40,686
<i>My Pretty Pink Bible Sticker Purse</i> by Gabrielle Thompson	40,232



2019 Highest Volume Accounts

Airport Location Hudson Group Chicago O'Hare Int'l Airport, IL \$229,771 Retail; Qty 24,495	Drug Store CVS/pharmacy #2769 Brooklyn, NY \$22,848 Retail; Qty 2,408	General Merchandise Store Lehman's Kadron, OH \$78,993 Retail; Qty 8,665
Hospital Gift Shop Veterans Center #508 Atlanta VA Medical Center Decatur, GA \$54,733 Retail; Qty 4,299	Hotel/Motel Location Gaylord Doryland Resort (Travel Traders) Nashville, TN \$22,888 Retail; Qty 2,219	Independent Supermarket Shady Maple Farm Market East Earl, PA \$19,737 Retail; Qty 1,581
Supermarket Chain Store Wegmans Food Market #40 Lanham, MD \$66,862 Retail; Qty 6,719	Travel Center Location Pilot Travel Center #602 Birmingham, AL \$33,260 Retail; Qty 4,210	Restaurant Shady Maple Smorgasland East Earl, PA \$63,406 Retail; Qty 5,010
Mass Merchandise Store Walmart #2799 Clumco, MD \$326,624 Retail; Qty 28,861 (POS \$228,291; Qty 27,073)	Military Base Facility AAFBS #1010729 Fort Hood Main Store Killeen, TX \$81,817 Retail; Qty 8,963	Walmart Market Walmart Market #308 8 stores in Maryland \$1,149,122; Qty 104,450 (POS \$804,501; Qty 98,473)

Reader Responses

San Diego, CA – "What a blessing you guys have been! God showed me one of your book displays in the Albuquerque Airport when I was making many trips there due to my mom's health. (She's incredibly better now, praise Jesus!) **What a difference your books have made!** What a connection with God so He could ease my pain and anxiety, showing me love and giving me moments of joy during the tremendous pain of my mom's severe illness. Words just can't express my gratitude to you guys and to our kind Father God!"

Hendersonville, NC – *Unbridled Faith* is the best devotional I've ever read. **Several people have seen my copy, randomly picked a page and been affected by it personally and purchased it themselves!** Thank you for sharing it!"



Christ Church, Barbados – "I was looking for a book to read whilst waiting for my flight at Fort Lauderdale Airport. I visited several shops to no avail. Nothing tugged at my spirit. Choice Books was in the last store I entered and the book, *Women of the Bible for Women of Color*, jumped right out at me. It is very easy to read with Bible verses for reference. I also purchased *The Pocket Bible Devotional for Women* for my sister. **It wasn't a coincidence going into that store."**



IMPACTING OUR COMMUNITY



GARDEN SPOT
VILLAGE

2019 AT A GLANCE

Garden Spot Village provides abundant opportunities to live with purpose in community—to residents, team members and everyone who visits. This desire to build community overflows into our non-profit commitment to the commonwealth through support to other non-profit organizations who support New Holland and the surrounding communities. Here are just a few of the ways we supported local non-profits in 2019.

www.gardenspotvillage.org

\$40,770
Cash Contributions to Other Non-Profits
Including CrossNet Ministries, Lancaster Mennonite School and Friendship Community.



1,753

Free Meals Served

at Garden Spot's monthly community event at CrossNet Youth Ministries.



325 LBS

of Fresh Produce Donated

to the local food pantry from our aeroponic greenhouse



\$162,975*

Donated Space to Non-Profits

Including hosting the New Holland CROP Walk, Gap Male Chorus rehearsals, Lancaster Mennonite Historical Society Amish Educational Series and more.



\$11,000

in cash donations to MCC—

from the Community Church at Garden Spot Village.

10 IVEP Volunteers
hosted through MCC since 2009



\$20,903+ **

Donated items thru Making-A-Difference

3,092 items like toothbrushes, diapers, clothing, winter coats, hats, scarves, backpacks and food through our monthly collection to benefit local non-profits like The Potter's House, Mom's House, Water Street Ministries, CrossNet Ministries and more.



524

Team Members Live and Serve

in our broader community, impacting the lives of people around them. In addition, their collective income positively impacts the local economy.

*Estimates based on market-rate meeting space rentals
**Estimates based on charitable gift contribution recommended amounts



Who We Are

Mission:

We exist to serve those affected by incarceration by being ambassadors of *life change* through the Gospel of Jesus Christ.

Core Values:

God-Centered

Jesus Christ is our foundation and our purpose; we strive to honor Him in all we do.

People-Empowered

We commit to support people, regardless of background, with dignity, respect, and the transforming love of Christ.

Service Oriented

We will serve customers, clients, and community with grace, compassion, and integrity.

Chaplain Services:

Our 15 Prison Chaplains are serving in 4 state prisons and 4 county prisons. They provide:

- Counseling
- Bible Studies
- Cellblock Visitation
- Discipleship Classes
- Pre-Release Program
- Worship Services



Aftercare Program:

For individuals recently released from prison, we provide an individualized program, which offers:

- Transitional Housing
- Mentoring
- Accountability
- Work Skills
- Life Skills
- Material Assistance



Did you know?...In 2019, Jubilee Chaplains:

- Led 797 worship services
- Taught 1,846 Bible Studies
- Taught 2,150 classes (Life skills, Parenting, and Recovery)
- Conducted 3,732 one-on-one counseling sessions

The statistics above are, of course, simply numbers. Yet each number represents a ministry opportunity. Look behind each ministry opportunity, and you will find a life in need.

Ways To Get Involved:

- **DONATE** - You can donate online, by mail or by phone. 100% of donations goes directly to our ministry programs.
- **DONATE GOODS** - We gratefully accept donations of clean, working, functional, sellable, and safe items.
- **VOLUNTEER** - We have volunteer opportunities for individuals, groups, and community service.
- **LEAVE A LEGACY** - Make sure your financial assets will be allocated to carry out Kingdom works for generations to come.

Jubilee Ministries Stores (Open: Monday thru Saturday 9:00 a.m.—8:00 p.m.)

Proceeds support Jubilee Ministries' work to rebuild, restore, renew...lives. Our stores are located at:

235 S. 12th St,
Lebanon, PA 17042
717-274-7528

27 E. Ferdinand St,
Manheim, PA 17545
717-664-0435

715 E. Lincoln Ave,
Myerstown, PA 17067
717-866-0218

232 W. Main St,
Palmyra, PA 17078
717-832-0400

1455 E. Main St,
Annaville, PA 17003
717-867-4657

Store hours: Monday thru Saturday 9:00 a.m.—8:00 p.m.

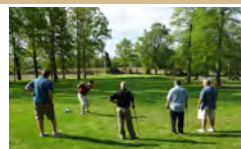
For more information, stop by the office at
235 S. 12th St, Lebanon, PA 17042

Phone: 717-274-7528
Email: Jubilee@jub.org
Website: www.jub.org

connect with us



Upcoming Events:



Golf Tournament
May 6, 2020



Fundraising Dinner
September 25, 2020



LANCASTER MENNONITE

Lancaster Mennonite School 2020 Report for LMC Celebration of Church Life

Transformation

Lancaster Mennonite's theme this year is about transformation based on Romans 12:2. While we have been in a structural transformation, we recognize the faith development, and physical and academic growth that each of us experiences throughout the year.



Students' Spiritual Formation & Growth

The high school Spiritual Formation class recently shared in chapel about their experience of growing their personal faith and living into their faith community.

One student, Elaina Dinse '20, shared, *"For me, this class helped me become more spiritually mature, finding many new ways to connect to God. I also found the community that I was missing with my classmates, who are now close friends."*

Their experience gave them the opportunity to sit across from students who were different from themselves, students they don't usually spend time with.

"This class helped me become more spiritually mature, finding many new ways to connect to God."




- Elaina Dinse '20

By the end of the semester, students gained trust, built strong relationships and learned to care for each other. They had a weekend retreat to complete the semester and are talking about ways they can stay in touch outside of class and after graduation.

Senior Presentations

High School senior presentations will be starting in early March. They are a culmination of student's experiences and faith journeys at LM. We are on a continuum of growth and change and it's exciting to see the transformation in students, faculty, staff and the LM community as we work to faithfully develop persons to positively change our world.

Student Snapshot:

- Graduated **144** students in 2019 
- **86%** of students go on to **2-4 year college or service**
- **201** churches, and **11+** denominations represented on **3** campuses 
- **5,416** student volunteer hours this year (all 3 campuses) 



Students planted 350 native trees on campus!

In conjunction with state agencies and a state-wide project, students and teachers planted trees along the banks of the Mill Stream, which runs through LM's campus. It will help create healthy stream habitat for fish and other wildlife.

LMC and MCC – 100-year partners in practical compassion

By Emily Jones

From the window of her Lancaster County, Pennsylvania, farmhouse, Miriam Charles saw the Ukrainian family arrive. It was June 1950. Pawlo and Maria Koroczynskyj had just immigrated from a displaced persons camp in Germany with their two small daughters. Charles and her husband Arthur had volunteered to host the family through Mennonite Central Committee (MCC). For the next five months, the Charles family and their LMC congregation, Chestnut Hill Mennonite Church, did their best to make their guests feel at home. “The church community responded warmly to the ‘strangers in our midst’ with clothing, food and invitations to their homes,” said Charles.¹

Though nearly impossible to count the ways LMC has partnered with MCC over the last 100 years, their shared goal has always been a simple one: to embody Jesus to people in need through practical, compassionate acts of service. LMC and MCC have been closely connected since MCC’s inception. Orie O. Miller, a founder of MCC, was a member of LMC congregation Ephrata Mennonite Church (now Alive Church). Miller served as executive secretary of MCC and, simultaneously, LMC’s Eastern Mennonite Missions (EMM) for more than 20 years until 1958.

Rhoda Charles (second from left) teaches knotting to Karen immigrants, from left, Mya Ray, an MCC Summer Service participant, Karee Paw and Ma Thain in 2013. The comforter was donated to MCC. Habecker Mennonite Church in Lancaster, Pennsylvania, welcomed Karen refugees now living in Lancaster County. (Photo courtesy of Jonathan Charles)



MCC was formed when representatives of various Mennonite and Mennonite Brethren groups met in July 1920 in Elkhart, Indiana, and pledged to aid hungry people, including Mennonites in southern Russia (present-day Ukraine). Moved to help, LMC and MCC tackled different facets of the crisis. MCC workers opened 140 food kitchens, supported by generous financial gifts, including from LMC congregations and church members. Meanwhile, LMC called on its congregations to help resettle at least 138 Russian Mennonite refugees who immigrated to the Lancaster area.²

Over the decades, EMM and MCC cooperated to identify needs in regions new to them and send workers. EMM and MCC workers entered locations including Vietnam in the 1950s and Hong Kong in the 1960s, where they sometimes served side by side. In the U.S., LMC churches and members coordinated relief sales, volunteered at MCC Thrift shops, and, like Miriam Charles, joined Christ’s global work through MCC however they were able.

Today, LMC and MCC advance their legacy of compassionate, practical service in old ways and new. They advocate for marginalized people through initiatives such as the New York Mennonite Immigration Program, where MCC partners with LMC and other churches to provide legal help to immigrants. After a century, LMC’s partnership with MCC may take new forms – but the same spirit of practical compassion in Jesus’ name is always there.

Visit mcc.org/centennial to join MCC in giving thanks for 100 years and seeking God’s guidance for the future.

¹ Miriam Charles, *My Offering of Thanks*, self-published, 2006, pp. 124-126.

² John Landis Ruth, *The Earth Is the Lord’s*, Scottdale, PA: Herald Press, 2001, p. 884.

Mennonite Central Committee, a worldwide ministry of Anabaptist churches, shares God’s love and compassion for all in the name of Christ by responding to basic human needs and working for peace and justice.



PO Box 10984, Lancaster PA 17605
www.mennonitechilrenschoir.org
mccl@lancastermennonite.org
 717-455-7025

Spring 2020 Report for LMC

We strive to develop musical excellence and discipline in children and youth, equipping them for a lifetime of worship and service to the Christian community. We pass on our singing heritage through Christ-centered repertoire that affirms Anabaptist beliefs and reflects the musical diversity of the church around the world and through time.

MCCL offers five programs for children in kindergarten through grade 12. Singers meet Tuesday evenings throughout the school year to prepare for a Christmas and Spring concert series. Currently, MCCL singers represent 65 congregations, 45 schools (homeschool counted as one), 13 denominations and are from Lancaster, York, Lebanon, and Chester counties.

In addition to presenting a bi-annual concert series, the choirs collaborate with other arts organizations, participate in benefit concerts, and share music with schools and other community organizations. Annual summer tours have provided opportunities for national and international travel and ministry. This coming summer, Concert and Chamber choirs will tour in Alabama, Tennessee, and Virginia. The choir has also sung at events such as Mennonite World Conference, local church conference events, Eastern Mennonite Mission events, Mennonite Central Committee benefit concerts, and local school chapel services. In addition, the choir connects with the local community by singing at locations such as retirement communities, Lancaster Central Market, Park City Center, Lancaster Barnstormers, and Music for Everyone.



Carol Choir
grades 2 - 5



Concert Choir
grades 6 - 8



Chamber Choir
grades 9 - 12



Prelude Music
kindergarten & grade 1



Choristers I & II
grades 2 - 5 & 6 - 8

Spring Concert Series 2020

Sunday, April 5, 4 p.m.

First Presbyterian Church, Lancaster

Saturday, April 18, 7 p.m.

Lancaster Church of the Brethren, Lancaster

Sunday, April 19, 4 p.m.

Derry Presbyterian Church, Hershey

Sunday, May 3, 4 p.m.

Neffsville Mennonite Church, Lancaster

Sunday, June 7, 7 p.m.

Mt. Gretna Tabernacle, Mt. Gretna

*Tickets are not required.
A freewill offering will be received.*



April 21, 2020
Open Rehearsal
Neffsville Mennonite Church

Designed for prospective singers to
experience MCCL rehearsals and
explore opportunities



Program of Lancaster Mennonite School

... training children and youth to glorify Jesus Christ through excellent choral singing.



Our Mission | To
provide a safe place for
men to recover from
addiction, experience
Christ-centered
discipleship, and
embrace God's unique
plan for their lives.

On Nov. 29, 1999 Transition to Community was officially birthed as an official 501c3 non-profit organization. Four years later Potter's House was birthed and both organizations have functioned as peer ministries in the Lancaster area. They provide Christ-centered residential programs bringing hope to men caught in the woes of addiction. Many of these men found themselves in prison due to addiction-related crime. In 2011 a merger of these two ministries took place and the growing vision today is known as The Potter's House ministries. The out of control opioid epidemic has sparked growth in the three-phase recovery program with plans for increased space for up to 40 men by the end of 2020. The growth also includes a new residential program, Potter's House of Ruth, for up to 8 women to open early 2020.



Still Waters

Still Waters in Brownstown will soon be the site of our much-needed Phase One Intensive Recovery Center. The two structures, a new group home and a director's house are now moving toward completion. We can hardly believe our eyes. God is so good!!! These majestic buildings, along the beautiful waters of the Conestoga River, inspire us with great anticipation for the times of ministry in the near future. They will soon be filled with men whom God is touching and addictions will be losing their power over them on a daily basis.



House Of Ruth

It is a busy exciting time at Potter's House of Ruth. Renovations are well underway with the addition of an office and additional bedroom space, as well as needed upgrades to the kitchen and main bathroom. Donations for furniture and needed items are coming in almost every day. The house manager has been hired and is living in the apartment. Interviews are underway for Women's Ministry Director and other staff. There is still a need for volunteers in many areas of the women's ministry including some openings on the Board of Directors. We are anticipating being able to open in early spring.

UPWARD CALL

COUNSELING SERVICES

2394 New Holland Pike | Lancaster, PA 17601

717.656.4834 | info@upwardcall.org

www.upwardcall.org

Upward Call currently consists of a merger of three agencies, each with a rich history of providing Christian counseling in the greater Lancaster area. These three agencies include Shepherd's Touch, Upward Call, and River of Hope. Shepherd's Touch and Upward Call originated in Lancaster County. Shepherd's Touch began in 1992, and Upward Call opened in 1996. River of Hope opened in the Lebanon area, and was the last to be brought under this umbrella. This gives us major outreaches into Lancaster and Lebanon areas, as well as the Gap area.

MISSION STATEMENT

We provide Biblically-based, Spirit-led counseling services, which are readily affordable to individuals, couples, families, and groups.

We strengthen marriages and family units through counseling, preventative programs, and enrichment services.

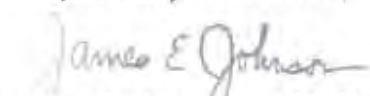
We build up the body of Christ and bless our community by enhancing the mental health and emotional well-being of its members, partnering in this healing ministry with the local church.

We equip others to be more effective counselors.

Upward Call offers services to individuals, couples, and families. Marital and family therapy are among our strongest service areas, but we also work with mental health issues, such as anxiety and depression. Our staff consists of 15 counselors, who contract with us to bring a variety of specialties to the table. A unique service we offer is an intensive marriage counseling program, which provides nearly 20 hours of counseling to couples in a weekend format. Upward Call is a growing agency. For example, we saw a total of 3,022 clients in 2018, and 3,721 in 2019.

We are pleased to be a part of the ministry of Lancaster Mennonite Conference and look forward to helping the conference churches in our area of expertise.

Respectfully submitted,



James E. Johnson, LCSW, D.Min.

Restoring *hope*
for the future.

I know the plans I have for you, says the Lord. They are plans for good and not harm; to give you a future and a *hope.*

• Jeremiah 29:11