



2023 resource partner organizations



Mount Clare Christian School



LMC is grateful for each resource partner organization who provides resources to LMC congregations.

Everyone is encouraged to visit the table displays in the Atrium area located between the East and West entrances, next to the Gym.

Thank you LMC resource partner organizations!



Mennonite World Conference

A Community of Anabaptist related Churches

Congreso Mundial Menonita

Una Comunidad de Iglesias Anabautistas

Conférence Mennonite Mondiale

Une Communauté d'Eglises Anabaptistes

Report to LMC: A Fellowship of Anabaptist Churches – 2023

Mennonite World Conference (MWC) is called to be a communion of Anabaptist-related churches linked to one another in a worldwide community of faith for fellowship, worship, service and witness.



GIVE THANKS

- In July 2022 MWC General Council gathered in person! Together, we celebrated **Global Assembly** and **Global Youth Summit** in Indonesia with almost 1,000 participants from our global communion of churches. Many more people participated virtually.
 - We were graciously hosted by the three Indonesian Mennonite National Churches and local congregations.
 - We are grateful that LMC was represented in these gatherings, and that **Hyacinth Stevens** was appointed to the Mission Commission.
 - You can experience the event by watching videos of worship gatherings and workshops or reading the plenary speeches on our website (mwc-cmm.org/assembly and mwc-cmm.org/courier).
- What else happened in 2022? Learn how the global church lived out unity as the body of Christ in our **Year-in-Review** video: <https://mwc-cmm.org/year-review2022>
- In 2017, we began **Renewal** – a series of events that commemorates the beginnings of the Anabaptist movement. We just celebrated our 7th annual Renewal event in Abbotsford, Canada (March 25). Theme: **Jesus Christ: Our Hope!** (<https://mwc-cmm.org/renewal2028>)

GET INVOLVED

- MWC is our Anabaptist global church with more than 1.4 million baptized believers in 107 national member churches, including LMC. Learn about our global Christ-centred faith community. Subscribe to (mwc-cmm.org/signup)
 - **MWC Info** (monthly e-newsletter)
 - **Prayer Network** (bimonthly)
 - **Courier/Correo/Courrier** magazine (quarterly)

- Have you participated in the MWC **Online Prayer Hour**? Every two months we gather to pray together with our global family. (mwc-cmm.org/onlineprayerhour)
- We are grateful for the LMC congregations that are joining Anabaptist churches around the globe in worship. Participate in **Peace Sunday** (mwc-cmm.org/peacesunday) and **Anabaptist World Fellowship Sunday** (mwc-cmm.org/awfs), and taking up a **One Lunch Offering** to support the ministry of our global Anabaptist church family.
- Thank you for your enthusiastic participation and generous support of the MWC community through the LMC, from local churches and individual donors!



PRAYERS OF GRATITUDE AND INTERCESSION

Pray for the ongoing ministry of MWC leadership teams including General Secretary César García, the MWC Executive Committee and Commission leaders who met in British Columbia March 27-29, staff who met March 30-31, 2023.

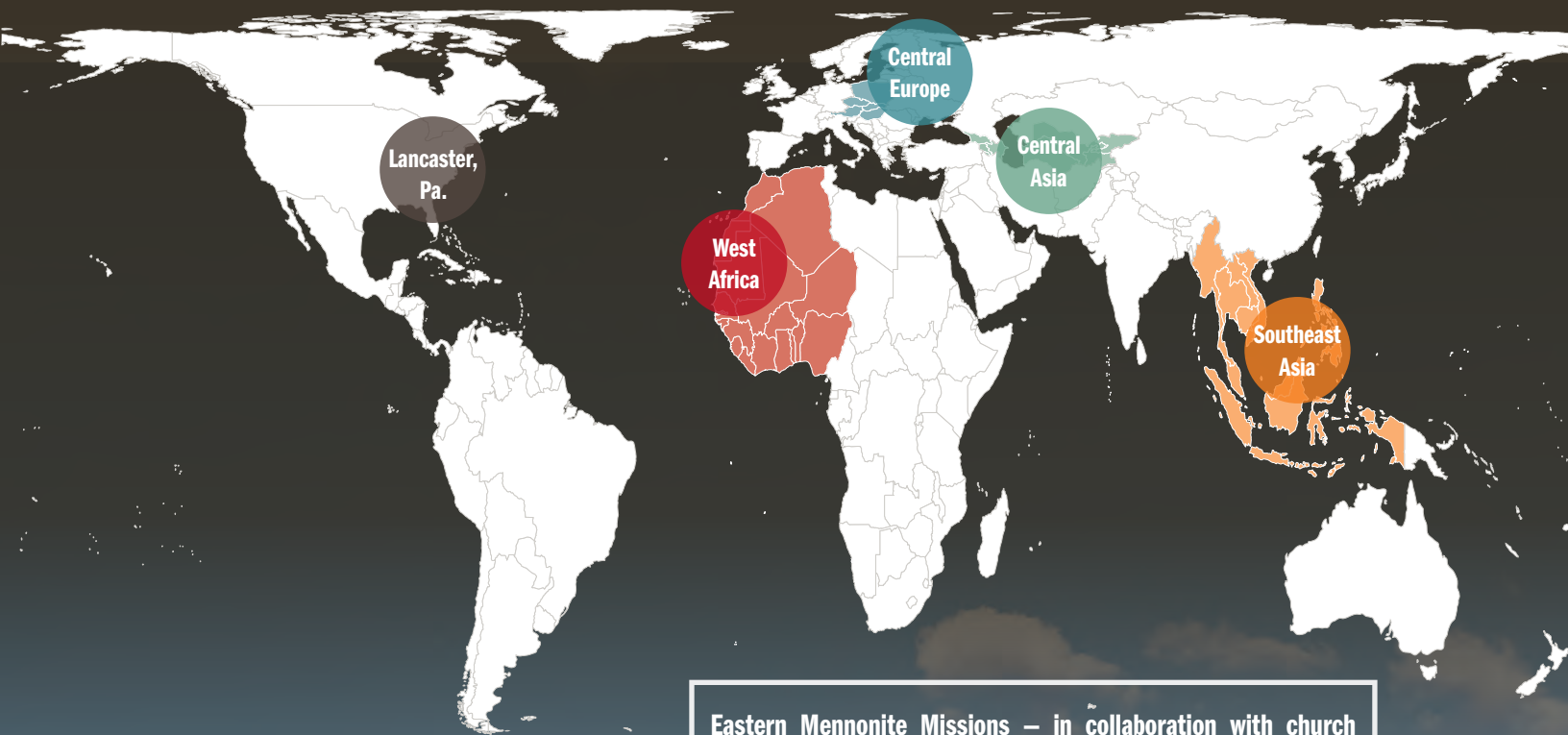
It is inspiring to hear of the growth of the LMC community and your commitment to serve the communities into which God has placed you and in which you generously share the gifts God has given in Christ by the Spirit.

As communities face uncertain futures due to persecution, natural disasters, political turmoil and conflict, the presence and identification with our global Anabaptist communion is an essential means of support and encouragement to walk in the way of Jesus Christ our Lord, Saviour and brother.



Submitted by Gerald Hildebrand, MWC North America Regional Representative
GeraldHildebrand@mwc-cmm.org

KINGDOM MULTIPLICATION *vision*



Eastern Mennonite Missions – in collaboration with church partners and other agencies – identifies, equips, and sends missional leaders to serve on multi-generational and multi-ethnic teams who invite people to follow Jesus as maturing, multiplying disciples that will nurture transforming communities of worship.

Special focus will be given to unreached people groups* of Central Asia, Central Europe, Southeast Asia, and West Africa, and to refugees in Lancaster, Pa.



* According to the Joshua Project, an unreached people group is one among which there is no indigenous community of believing Christians with adequate numbers and resources to evangelize this people group without outside assistance. This often means that the population of a people group is less than 2% evangelical.

EMM
everyone moving in mission

EMM had **103** workers serving in **22** countries in 2022

9 countries/regions within shaded areas not named for security concerns

84 long-term workers

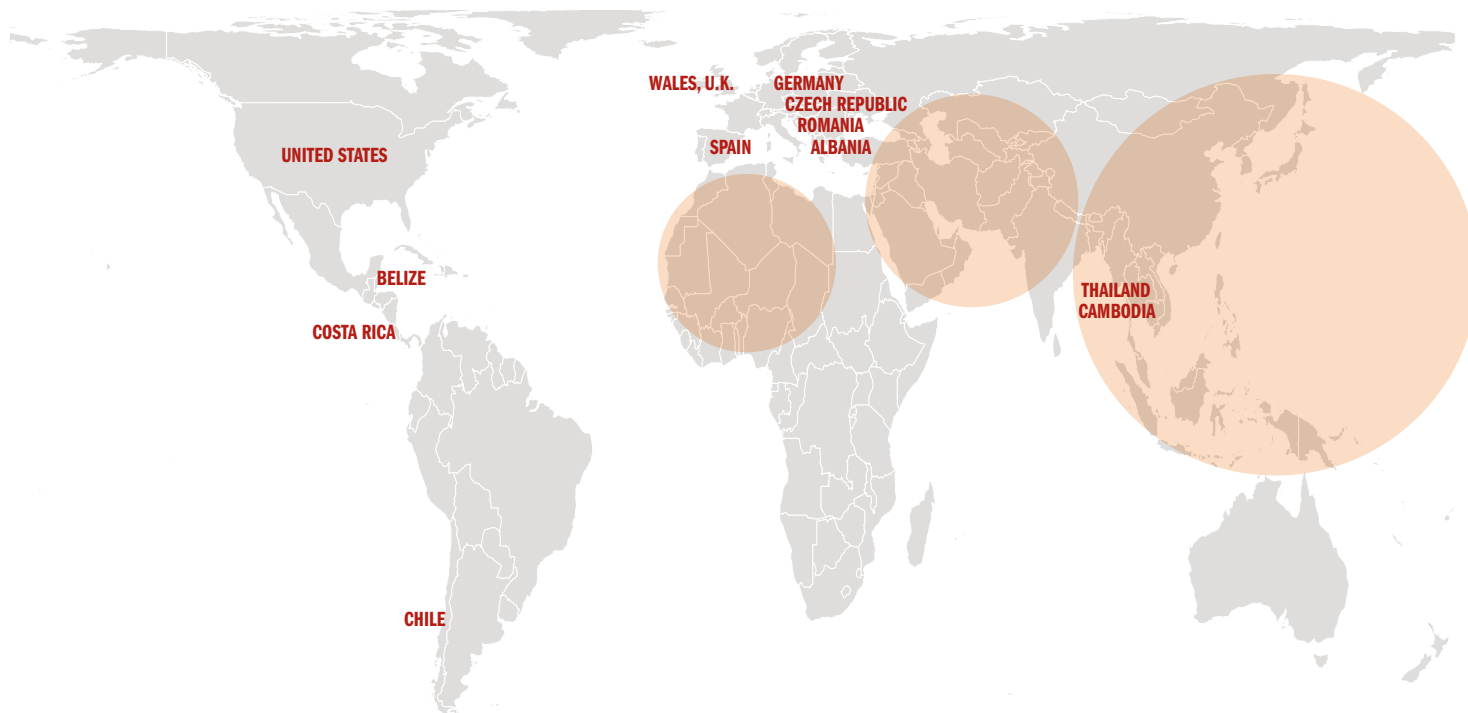
307 Missionary Support Team members

12 short-term workers

33 Staff members

69 Kingdom Team participants

14 Board members (who served at any point in 2022)



FINANCES 2022

Operating fund balance sheet

Assets

Cash and cash equivalents	\$7,742,145
Short-term investments	\$2,061,413
Receivables	\$2,481,183
Capital campaign pledges	\$100,985
Prepaid expenses	\$80,093
Interest in MASP reserve	\$193,460
Pension assets	\$138,714
Property and equipment, net of accumulated depreciation	\$3,867,764
Total assets	\$16,665,757

Liabilities and net assets

Deferred revenue	\$650
Payables	\$254,643
Funds in custody	\$2,558,152
Designated net assets	\$1,295,144
Undesignated net assets	\$12,557,168
Total liabilities and net assets	\$16,665,757

Total expenses by function: \$6,017,910

72.7%	Ministry programs
20.4%	Supporting activities
6.5%	Other programs
0.4%	Relief ministry

Total income by source: \$5,553,466

42.3%	LMC — A Fellowship of Anabaptist Churches
24.2%	Other Anabaptists
14.1%	Other supporters
11.3%	Estates and trusts
8.2%	Other income

Total income by type: \$5,553,466

54.7%	Personnel and projects (restricted)
22.9%	Impact Fund
11.2%	Estates
7.5%	Investments
3.1%	Capital campaign
0.6%	Other

We are grateful for the generous giving from congregations and individuals during 2022. If you would like a copy of the final audited report, please contact us at info@emm.org or 717-898-2251. As we continue into 2023, we invite you to prayerfully consider how you and your congregation can continue to support the Impact Fund. Go to [EMM.ORG/GIVE](https://www.emm.org/give) to support the Impact Fund.

Due to rounding, figures may not equal the totals shown.

EMM
everyone moving in mission

Stewarding Resources

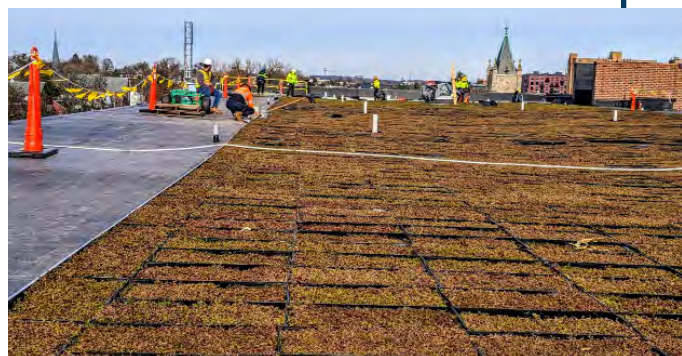
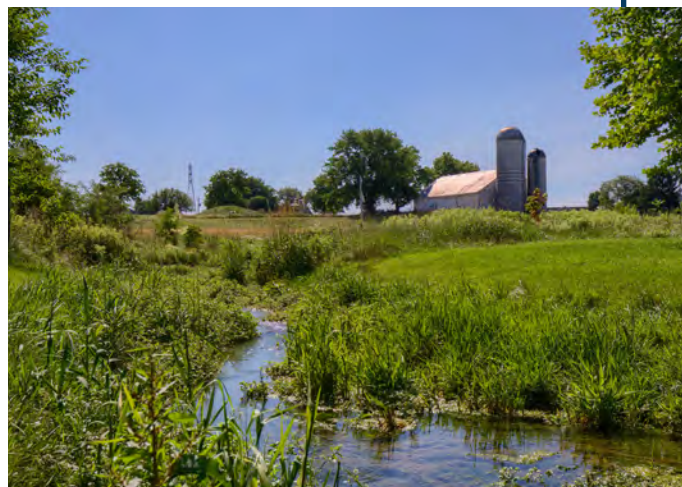
Stewardship is often thought of as the way organizations and individuals use financial resources, and while at Landis Communities that certainly rings true, it goes far beyond just dollars.

We believe strongly in careful use of the natural resources in God's creation. At Landis Homes, residents continue to care for Leaman Woods, Kurtz Run and the restored wetlands, removing invasive species and creating habitat for native plants and animals to thrive. In addition, residents and staff recently completed a Carbon Footprint analysis. As new construction is considered at Landis Homes, tentative plans call for an "eco-village" of cottage and apartment homes surrounding the wetlands on east campus.

Other parts of Landis Communities are also seeking to be good stewards. As Landis Place on King prepares to open 79 rental apartments for persons age 55+ in downtown Lancaster, a green roof, designed to slow rain runoff, is in place. At Steeple View Lofts, pervious pavement allows water to soak into the ground rather than running off to the sewer system. Geothermal production provides some of the energy for heating and cooling for Mountain View Terrace and part of the Landis Homes campus. And energy efficient heat pumps are part of development for Landis Place on King.

For many of those we serve, aging where they are is the best way of stewarding resources. For decades, Landis at Home and Landis Adult Day Services have been enabling families to do just that. In addition, our collaborative partnership with Friends Life Care means more than 50 persons are members of a Continuing Care at Home program, giving people as young as 40 opportunities to begin saving in case they need long term care and enabling them to stay in their homes. For those needing care, Landis Homes is serving with nationally recognized excellence. This year, Healthcare and Rehab Care were listed in US News & World Report "Best Of" rankings. In addition, Landis Homes is one of only two retirement communities in Lancaster County, PA to be accredited by CARF (Commission on Accreditation of Rehabilitation Facilities), a voluntary accreditation whose standards exceed what is required by regulations.

We continue to work at being good stewards in support of our more than 600 team members as well. We are blessed with a very diverse work force made up of persons from at least four generations, and with nearly 30% of our staff coming from a wide variety of ethnic and racial backgrounds. We believe this work is essential in fulfilling our mission of following God's call to creatively serving the diverse needs and interests of older adults. It will also help to ensure a culturally appropriate work environment where all experience a sense of belonging. Landis Communities and our affiliate boards are committed to living our values of joy, compassion, integrity, stewardship, and community in a way that brings honor and integrity for all.



1001 E Oregon Road • Lititz, PA 17543
(717) 381-3500 • LandisCommunities.org

Landis
Communities

Landis Communities and Friends LifeCare have collaborated to offer flexible and comprehensive long-term care plans including expert care coordination and home care services, to those living in Lancaster and Lebanon County, PA. A continuing Care at Home (CCaH) membership is a unique approach to aging in place that gives you the peace of mind knowing where care will come from, how it will be arranged, and how it will be paid for if and when your health changes. It is an affordable alternative or supplement to long-term care insurance. For more information, see FriendsLifeCare.org/Landis.

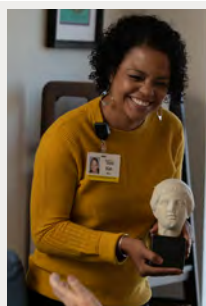


NO LONGER ALONE SUPPORT GROUP

This group provides a place for those who have a loved one living with mental illness. They meet on the 4th Sunday of the month (over Zoom currently). Each meeting begins with a presentation by speakers who are individuals in the mental health field or other area experts that can provide support, guidance, or resources for those dealing with the mental illness of a family member. Following the presentation, the group then has the opportunity to participate in the 'share and care time'. Call Landis Communities at 717-381-3500.

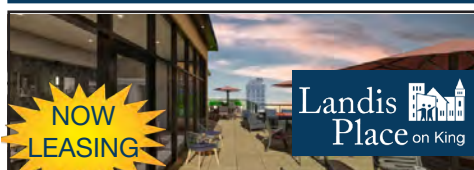


Thrive at home with Landis at Home! Call 717.509.5880 or visit LandisAtHome.org



GRACEFUL TRANSITIONS

through Landis at Home can help with packing/unpacking, seasonal needs such as closet changeovers, indoor/outdoor decor and flower bed maintenance, downsizing or decluttering needs, home organization, and cleaning out accommodations once vacated. Please call Landis at Home at 717-509-5800 for more information.



Landis Place on King offers one- or two-bedroom apartments with beautiful views of the cityscape. All apartments have balconies or patios for relaxing and entertaining friends and family.

239 W. King St, Lancaster, PA
LandisPlace.org | 717-923-5510



ENRICHING EACH DAY, TOGETHER

717.581.3939 • LandisAdultDay.org



— LANDIS ADULT DAY SERVICES —

GOLF OUTING

June 2nd • Foxchase Golf Club

717.381.3580
LandisAdultDay.org/Golf



There are lifelong learning opportunities for all who are age 55+ at Pathways Institute. Visit: bit.ly/LancasterPathways

MARK YOUR CALENDARS



— LANDIS HOMES —

FELLOWSHIP DAY

Saturday, September 16th, 2023
Chicken BBQ • Auction • More!



FRIENDSHIP COMMUNITY ANNUAL REPORT 2022



Impacting the World with Capabilities

Friendship Community is a Christian ministry cultivating capabilities of Individuals with Intellectual Disability and Autism in south central Pennsylvania since 1972.



Residential Services

► *73 Individuals served*



Home Based Services

► *16 Individuals served*



Friendship Heart Gallery & Studio

► *50 Individuals served*

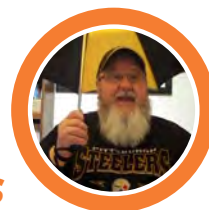
► *Mural completed on Rachel's Cafe & Creperie*

► *New E. Oregon Studio opened!*



Spiritual Nurture

► *All Individuals and Team Members impacted by the love of Christ!*



Mennonite Life's mission is to hold, honor, and share items and stories featuring the lived experiences and faith values of Lancaster Mennonites and interrelated communities.

We partner with LMC, MC USA's Atlantic Coast Conference, and with other Anabaptist groups.

We hope to see you and hear from you in 2023! Visit us at our two Lancaster campuses or browse our extensive online archives with your membership at mennonitelife.org.



Want to become a member?

Mennonite Life membership provides:

Our quarterly magazine
Pennsylvania Mennonite Heritage

The up-to-date scoop
through our newsletter

Members-only access to
many online research
materials

Complimentary access to
our archives and library

Free on-site use of
Ancestry.com

Other exclusive benefits

**Learn more at
mennonitelife.org**



Mennonite Life

Mennonite Life Visitors Center & Biblical Tabernacle Experience

Our Visitors Center hosts a wide variety of guests. A glimpse of one week in the fall: we hosted a Ukrainian family, a Spanish speaking group, a Coptic Orthodox church, and a group of motorcyclists from around the world. We look forward to seeing who comes through our doors this spring!

*Open Tuesday through Saturday,
9:30am - 4pm.*



1719
museum

 Mennonite Life

Explore a 300-year-old home built by a Mennonite family, and walk inside a recreated Indigenous longhouse at the 1719 Museum. This an ideal location for a school field trip, a family day out, or a solo trip to explore Lancaster's history.

*Open Friday and Saturday,
10am - 4pm. Group reservations
available at other times.*



Mennonite Life

*"... by speaking the truth
with love, let's grow in every
way into Christ."*

– Ephesians 4:15b (CEB)

Churches call upon Everence as helpful stewardship partner

Churches can count on Everence Financial® as a reliable stewardship partner.

Working closely with congregations and their members has been at the core of what we do since our founding as a mutual aid organization in 1945.

We help our members find effective ways to be more generous, as part of our focus on stewardship as a spiritual discipline – stemming from the historical biblical belief of Anabaptist Christians that all we are and all we have is from God (Psalm 24).

Pastors and church leaders also rely on Everence for helpful stewardship education resources. Learn more at everence.com/churches.

Sharing Fund helps churches reach more people in need



The Everence Sharing Fund helps thousands of families and individuals every year with basic, everyday needs.

Everence has awarded about \$4.7 million in Sharing Fund grants in the last five years, and our partner congregations distributed about \$7 million more.

Seek Growth

Everence 2023 report

LMC

Celebration of Church Life

March 31 - April 1, 2023

The Sharing Fund is, in most cases, a matching grant program. Churches with an Everence stewardship advocate can request matching Sharing Fund dollars to help meet the needs of people in their church and community.

From financial struggles to emergency crises, Sharing Fund grants help people keep a roof over their heads, buy food for their families and pay medical expenses.

To see how your church can access Sharing Fund grants – or to donate to the program, visit everence.com/sharing-fund.

MyNeighbor card is working to boost charitable causes



The MyNeighbor credit card from Everence Federal Credit Union is doing what credit union leaders intended – supporting the communities in which their members live and work.

Since its launch in 2017, the MyNeighbor card has generated more than \$1.7 million for charitable organizations, including individual churches.

Members use the card the same way they'd use an ordinary credit card, but instead of generating

points or airline miles, 1.5% of each transaction total is donated by Everence to the cardholder's chosen charity.

The "neighbor" you choose just needs to be a 501(c)(3) public charitable organization. You can change which organization receives your donations via an online dashboard.

Want to know more? Visit everence.com/myneighbor.

A variety of resources to help churches thrive

Churches have unique financial and stewardship needs – something Everence understands better than many financial services providers, thanks to our 78-year history of working with churches, their staff and their members.

From telling your church's story, fulfilling your ministry, and looking to your church's future, our knowledgeable stewardship consultants can share ideas with pastors, church leaders, Sunday school classes, and small groups about cultivating generosity and sustaining giving over the long term.

And Everence partners with denominations and networks to offer benefits such as retirement plans for pastors and staff. Check out everence.com/churches to learn more about how we can work together.



"... Más bien, al vivir la verdad con amor, creceremos hasta ser en todo como aquel que es la cabeza, es decir, Cristo."

– Efesios 4:15b (NVI)

Las iglesias invocan a Everence como socio útil de mayordomía

Las iglesias pueden contar con Everence Financial® como un socio de administración confiable.

Trabajar estrechamente con las congregaciones y sus miembros ha sido el núcleo de lo que hacemos desde nuestra fundación como una organización de ayuda mutua en 1945.

Ayudamos a nuestros miembros a encontrar maneras efectivas de ser más generosos, como parte de nuestro enfoque en la mayordomía como disciplina espiritual, derivada de la creencia bíblica histórica de los cristianos anabautistas de que todo lo que somos y todo lo que tenemos es de Dios (Salmo 24).

Los pastores y líderes de la iglesia también confían en Everence para obtener recursos útiles de educación de mayordomía. Obtenga más información en everence.com/churches.

El Fondo Compartido (Sharing Fund) ayuda a las iglesias a alcanzar a más personas necesitadas



El Fondo Compartido de Everence ayuda a miles de familias e individuos cada año con las necesidades básicas y cotidianas. Everence ha otorgado alrededor de \$4.7 millones en subvenciones del Fondo Compartido en los últimos cinco años, y nuestras congregaciones asociadas

Busca el crecimiento

Reporte Informativo de Everence 2023

LMC

Celebración de la vida

31 de marzo - 1 de abril de 2023

distribuyeron alrededor de \$ 7 millones más.

En la mayoría de los casos, El Fondo Compartido es un programa de subvenciones de contrapartida. Las iglesias que tienen un defensor de mayordomía de Everence pueden solicitar dólares equivalentes del Fondo Compartido para ayudar a satisfacer las necesidades de las personas en su iglesia y comunidad.

Desde dificultades financieras hasta crisis de emergencia, las subvenciones del Fondo Compartido ayudan a las personas a mantener un techo sobre sus cabezas, comprar alimentos para sus familias y pagar gastos médicos.

Para ver cómo su iglesia puede acceder a las subvenciones del Fondo Compartido – o para donar al programa, visite everence.com/sharing-fund.

La tarjeta MyNeighbor está impulsando causas benéficas



La tarjeta de crédito MyNeighbor de Everence Federal Credit Union está haciendo lo que los líderes de las cooperativas de ahorro y crédito pretendían: apoyar a las comunidades en las que viven y trabajan sus miembros.

Desde su lanzamiento en 2017, la tarjeta MyNeighbor ha generado más de \$1.7 millones para organizaciones caritativas, incluyendo iglesias.

Los miembros usan la tarjeta de

la misma manera que usarían una tarjeta de crédito ordinaria, pero en lugar de generar puntos o millas aéreas, el 1.5% del total de cada transacción es donado por Everence a la organización benéfica elegida por el titular de la tarjeta.

El "vecino" que usted elija solo necesita ser una organización caritativa pública 501(c)(3). Puede cambiar qué organización recibe sus donaciones a través de un panel de control en línea.

¿Quieres saber más? Visita everence.com/myneighbor.

Una variedad de recursos para ayudar a las iglesias a prosperar

Las iglesias tienen necesidades financieras y de mayordomía únicas, algo que Everence entiende mejor que muchos proveedores de servicios financieros gracias a nuestra experiencia de 78 años de trabajo con las iglesias, su personal y sus miembros.

Desde contar la historia de su iglesia, cumplir con su ministerio y mirar hacia el futuro de su iglesia, nuestros consultores, expertos en mayordomía, pueden compartir ideas con pastores, líderes de iglesias, clases de escuela dominical y grupos pequeños sobre cómo cultivar la generosidad y las donaciones sostenibles a largo plazo.

Y Everence se asocia con denominaciones y redes para ofrecer beneficios como planes de jubilación para pastores y personal. Consulte everence.com/churches para obtener más información sobre cómo podemos trabajar juntos.

Camp Deerpark

A Ministry of the New York City Mennonite Churches

A year of transitions

In any ministry, but especially in the camp and retreat ministry, it is the people who make the ministry happen. The summer staff are the key to summer camp. Our year round staff are the key to our retreat ministry. A few years ago I received a phone call from a woman who told me, "I don't remember the name of the camp, I don't remember where it was, I don't remember what we did, but I know my counselor was Donna and her husband was Duane." "Actually, Duane was her brother, but you have found the right place." People and relationships are important.

God has blessed our staff community with stability. However, this past year has been a year of transitions.

After four years of service, Leonard and Katrina Mow left camp in May to pursue a life of mission and home repair. You can follow them at <https://www.youtube.com/@travelinghope4905/>

Ben and Susan Cheek who had served as construction supervisor for seven years also followed a call to ministry and church planting. They are now living in Staten Island and working on a church plant in northern New Jersey.

Sean McConaghay who has been the facilities director for more than fifteen years has moved over to assume the role of construction supervisor.

Kenton Baer who was instrumental in building the first four cabins in Promise Woods has returned to help us finish the seventh and eighth cabin and complete the Promise Woods village.

Wendell Baer along with his new bride, Carissa, joined our staff in the fall as the facilities director.

Alycia Brickman and Amanda Dominguez also joined our staff as housekeepers.

Core values are the heart of our ministry here at Camp Deerpark. However, it is the fingertips where lives are touched by the love of Jesus. Please keep our staff in your prayers as we provide a place where children, youth, and families can fellowship together in the serenity of God's creation.

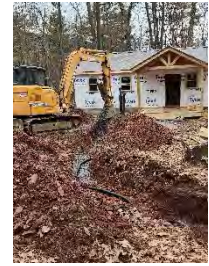
Thank you LMC for your support.





CAMP HEBRON

God is good, all the time! All the time, God is good! 2022 was a year of abundance and we were able to see God's hands at work around us. The work has continued on our upper cabin loop and all 6 cabins will be fully renovated over the next few weeks! Here are a few joys from 2022!



- Launched the "Guide" program, which is a yearly adventure education and discipleship training program from September through the end of May. Students learn to lead adventure activities while focusing on spiritual growth and development. Applications are open for the Fall of 2024!
- Summer camper numbers continue to be high. Many children, youth, young adults, and families spent time in fellowship, worship, and creation.
- Guest Ministry numbers continue to increase! We are climbing back to numbers that are equal with pre-covid guest ministry.
- There's been a huge influx of volunteers helping across all areas of the ministry!
- So many other joys and moments where we see God's provision!

SUMMER CAMP THEME AND REGISTRATION

Staff are interviewing and campers are registering for this coming summer! We have campership dollars available and want to make sure anyone that wants to come to camp gets a chance! Please encourage your young people and families to consider registering for an event. We are excited to have some new partnership opportunities for summer 2023. Creative Arts camp is being done in partnership with Salt & Light Ministries. We are also offering a fully funded week of camp to any young adults that are aging out of Foster Care or have in the last couple of years. Anyone needing additional information can call camp (717) 896-3441 or email info@camphebron.org.



FINANCIALS/CAPITAL CAMPAIGN

Camp Hebron donors continue to give generously towards completing the Capital Campaign. We have an additional \$800,000 to raise to complete all the remaining projects. The Lower six cabins is the largest part of the project remaining. We are hoping to receive individual donations, church support, and grants. If there's a chance to visit with your church about sponsoring a cabin please contact deke@camphebron.org. Generous donations to general operations, fees from summer camp, and guest ministry revenue have all been great and we remain in a strong financial position.

WAYS TO GET INVOLVED

- **Pray**- thank God for abundance, safety, and people growing in their faith. Pray for staffing- *especially in food service and housekeeping*, safety, wisdom, and staying centered on Jesus.
- **Volunteer**- there are many opportunities for individuals with all levels of skill to volunteer and help in all the areas of camp. Help with remodeling, cleaning, food service, mailings, and more!
- **Give**- The Camp Hebron community is so generous! We still need your support. Donations to the capital campaign, general operations, and specific projects are so valuable!



Impacting Our COMMUNITY



GARDEN SPOT
VILLAGE

2022 AT A GLANCE

Our founder, Dale Weaver, believed that Garden Spot Village should be a community that reaches out and makes a difference in our local community. He believed that we should generously share our time, talent and treasure. This underlying part of our culture compels residents and team members to continuously look for ways we can partner with our community and make a difference, right here in Lancaster County.

www.gardenspotvillage.org



4,100

MEALS PROVIDED

Residents and team members donate funds to support a monthly community meal at CrossNet Youth Ministries.



100LBS

FRESH LETTUCE DONATED

We plan for surplus in our aeroponic greenhouse because we want to bless our community with fresh lettuce through the local food pantry.



25+

SPONSORED CHILDREN

Garden Spot residents and team members sponsor students living in the urban slums of Nairobi, Kenya through Missions of Hope International, a Garden Spot sponsored mission organization. Their monthly monetary support and regular correspondence build international, intergenerational relationships.



559

TEAM MEMBERS

Live and serve in our broader community, impacting the lives of their friends and neighbors.



252

VOLUNTEER HOURS FOR NYSUM

A team of 14 residents and team members traveled to New York School of Urban Ministry (NYSUM) where they volunteered, renovating dorm rooms, doing food truck ministry and raising funds for an elevator replacement campaign.



\$36,000+

DONATED ITEMS

Through Making-a-Difference

7,621 donated items like toothbrushes, non-perishable foods, pet food and pet supplies, eyeglasses, winter coats and backpacks. Residents and team members support a monthly collection of material goods for local nonprofits like the Pet Pantry of Lancaster County, Ronald McDonald House, COBYS, Water Street Mission and CrossNet Ministries.



\$61,900

CASH CONTRIBUTIONS

To Other Non-Profits

We believe in supporting our local community, so that's why as an organization, Garden Spot supports fundraising efforts of local non-profit organizations like CrossNet Ministries, ELANCO Public Library and Fulton Theatre. These donations do not include the countless donations provided by residents and team members who also support their local community.



\$1,721,000

PER YEAR IN LOCAL TAXES

The largest taxpayer supporting ELANCO School District.



\$26,250

TO GARDEN SPOT FIRE RESCUE

Garden Spot partners closely with Garden Spot Fire Rescue, supporting in ways that go beyond an annual donation. Volunteers train in the stairwells of Garden Spot's Village Square Apartments and residents donate time and resources above and beyond our organizational donation.



LANCASTER
MENNONITE
FAITH • EDUCATION • COMMUNITY

Lancaster Mennonite School 2023 Report for LMC Celebration of Church Life

Positives as a Result of Unification

LM is in a growth mindset, with a focus on strategic innovation and engagement in priority areas. A few years ago, we announced one of LM's most audacious ideas yet: to become a unified campus in one location. As a result, the 2022-2023 school year is the first year in which all LM's grade levels from PreK through 12th grade are together on one campus. We've had strong retention, and it's been wonderful to have everyone on one campus so we can embrace the opportunities for peer mentorship, increase collaboration between teachers in different grade levels, and make use of the fantastic facilities on our 95-acre campus.



Senior student peer mentoring younger students in the 2nd grade Spanish Immersion Program class

Graduating the Original Spanish Immersion Program Class This Year!

LM's Spanish Immersion program began 12 years ago with a pilot class of 21 first graders. These students spent their days in the immersion model with teachers who used the entire school day to instruct them in another language so that students would become bilingual in Spanish and be prepared to live, serve and

work as global citizens. This spring, six students from the original first grade class are preparing to graduate from LM. Read the full article on our website.

Strategic Planning & Action

We are a community that dares to pray, love and hope. We are also a community that commits to strategic action. The board

approved the system's guidelines of Six Strategic Priorities undergirded by LM's core values:

- A Culture of Success
- Use of Data
- High Expectations
- Program Review
- Growth
- Stakeholder Engagement

Accordingly, LM is completing reaccreditation, a process happening in tandem with our strategic planning process and to further enhance our programmatic and curriculum priorities. We believe that we are well-positioned to make our priorities a reality.

We are poised to attract new students and empower all of our students, faculty, and staff because we are committed to fostering a Christ-centered environment for human flourishing where lives are eternally impacted through God's mission (Colossian 3: 12 & 14).

Sincerely,
Dr. Michael Badriaki
LM Superintendent





Mennonite Children's Choir of Lancaster
PO Box 5146, Lancaster, PA 17606
www.mennonitechilrenschoir.org
mccl@lancastermennonite.org

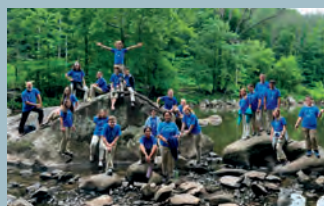
Nearly 150 young singers from 47 congregations, 45 schools and 12 denominations sing in the Mennonite Children's Choir of Lancaster (MCCL). **Singing with others in a choir creates community in profound ways** - learning to blend with others through attentive listening, gaining confidence through being part of a team, and engaging with the church around the world through music texts of faith. We are grateful to provide opportunities for young singers to develop musically, spiritually, and personally. **Choir highlights from the past year include:**

Chamber Choir GO! Czech Republic Tour with Eastern Mennonite Mission in June 2022



Singers spent two weeks sharing music with and being hosted by local Czech congregations alongside local EMM church workers. They also visited and sang at a prison, a retirement home, and public schools.

Concert Choir Tour to Eastern Pennsylvania and Music in the Parks Adjudication in June 2022



Middle school singers performed concerts for two congregations and a retirement home. Additionally, they served at a local camp and received top honors at an adjudicated choral event at Hershey Parks.

Christmas Concerts and Mennonite Disaster Service Annual Celebration



In December 2022, we sang in awe-inspiring spaces for our Christmas concerts at St. Mary's Catholic Church, Neffsville Mennonite Church, and Highland Presbyterian Church. **Singers retold the story of the glorious birth of Christ through song and scripture.**

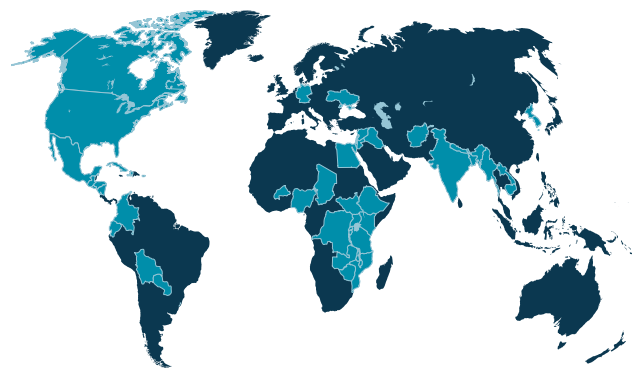
On February 10, 2023, we were honored to be a part of leading and sharing worship at the Mennonite Disaster Service Annual Celebration. It was a gift to be a part of celebrating the work of the broader church through singing together.

MCCL honors music as a gift from God by creating exceptional choral music, fostering community, and nurturing character. We equip children and youth for a lifetime of worship and service to the church and community through Christ-centered repertoire that both affirms Anabaptist beliefs and reflects the musical diversity of the church around the world and across time. **Auditions for our 2023-2024 choir season will begin in May.** We invite you to share about MCCL with your congregation and community. Visit www.mennonitechilrenschoir.org for more details.

2023 report for LMC

MCC U.S. and MCC East Coast

Toll Free: (888) 563.4676 • MailBox@mcc.org • mcc.org



45
countries

381
partners

496
projects

Have you ever compiled a list of all of the ways that water can be life-giving? Maybe that's an impossible task, but here are a few examples.

In the photo at right, Phann Soy, a farmer in rural Kompong Trabek District, Cambodia, feeds fish in a fishpond behind his house. The pond was designed and built by an MCC partner as part of a model to help farmers adapt to climate change. In addition to enhanced income from fish, it provides water for vegetable gardening during the dry season.



MCC photo/Charles Conklin

In Ethiopia's Amhara region, an MCC partner's work with conservation agriculture has helped farmers double and even triple their harvests. Combining watershed rehabilitation with conservation agriculture means that land is protected from erosion and soil quality is improved via water retention strategies.

And then there is the invitation in Isaiah 55:1 (NIV): "Come, all you who are thirsty, come to the waters ..." This is the living water that Jesus speaks about, the water without price, which becomes a well springing up to eternal life.

All of us, even those who come to this living water, sometimes need assistance from others, and sometimes can provide that assistance. Thank you for enabling MCC to be a vessel of hope in times of need through your prayers, contributions and volunteer efforts. And thanks be to God for living water.

In appreciation,

Ann Graber Hershberger, MCC U.S. executive director

Hyacinth Stevens, MCC East Coast executive director

Karl McKinney, MCC U.S. board member

MCC's 2023 guiding scripture

Come, all you who are
thirsty, come to
the waters

Isaiah 55:1 (NIV)

MCC and LMC connections

- MCC hosted peace camps for young adults in Puerto Rico in November and New York in January. These events offered healing, hope, connection and practical tools for actively working at peace and justice.
- In 2022, MCC celebrated 50 years of Thrift. In July, MCC East Coast melded the joys of thrift shopping and bicycling by hosting a series of "Tour de Thrift" bike rides in the Lancaster, Pennsylvania, area. The series of rides aimed to inspire shopping at, donating to and volunteering with MCC Thrift, while raising money for MCC.
- Thank you for your work with and support of MCC relief sales and material resources centers.



MCC and partners in Ukraine continue to meet needs in the midst of war. The photo shows an unexploded rocket in the garden of a destroyed home in the Chernihiv region. "People have immense needs right now—food, water, shelter—which we're working to address," said Blaine Derstine, recent interim representative for MCC

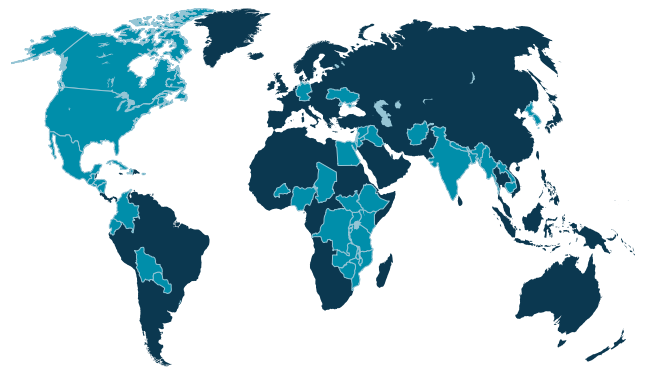
in Ukraine. "And even with the unclear picture of the future in Ukraine, we also have to be thinking for the long-term, what needs people will have if and when they start returning to Ukraine." Pray for the people and leaders of Ukraine and Russia.

Photo courtesy of Mikhailuk Maya

Informe 2023 para LMC

CCM EE.UU. y MCC East Coast

Llamada gratuita: (888) 563.4676 • MailBox@mcc.org • mcc.org



45

países

381

asociados

496

proyectos

¿Has hecho alguna vez una lista de todas las formas en que el agua puede dar vida? Tal vez sea una tarea imposible, pero aquí hay algunos ejemplos.

En la foto de la derecha, Phann Soy, un agricultor del distrito rural de Kompong Trabek (Camboya), alimenta a peces en un estanque situado detrás de su casa. El estanque fue diseñado y construido por un socio de CCM como parte de un modelo para ayudar a los agricultores a adaptarse al cambio climático.

Además de aumentar los ingresos procedentes de la pesca, también proporciona agua para el cultivo de hortalizas durante la temporada seca.

En la región etíope de Amhara, el trabajo de un socio del CCM con la agricultura de conservación ha ayudado a los agricultores a duplicar e incluso triplicar sus cosechas. Combinar la rehabilitación de las cuencas hidrográficas con la agricultura de conservación significa proteger la tierra de erosión y mejorar la calidad del terreno mediante estrategias de retención del agua.

Y luego está la invitación de Isaías 55:1 (NVI): “Venid todos los sedientos, venid a las aguas...”. Esta es el agua viva de la que habla Jesús, el agua sin precio, que se convierte en un pozo que salta hasta la vida eterna.

Todos nosotros, incluso los que acuden a esta agua viva, a veces necesitamos ayuda de otros, y a veces podemos proporcionar esa ayuda. Gracias por permitir que el CCM sea un recipiente de esperanza en tiempos de necesidad a través de sus oraciones, contribuciones y esfuerzos voluntarios. Y gracias a Dios por el agua viva.

En agradecimiento,

Ann Graber Hershberger, directora ejecutiva de CCM EE.UU.

Hyacinth Stevens, directora ejecutiva de MCC East Coast

Karl McKinney, miembro de la Junta Directiva para EE.UU. del CCM



Foto de CCM/Charles Conklin

Escritura guía del CCM para 2023

¡Vengan a las aguas todos los que tengan sed!

Isaías 55:1 (NVI)

Conexiones entre el CCM y el LMC

- El CCM organizó campamentos por la paz para jóvenes adultos en Puerto Rico en noviembre y en Nueva York en enero. Estos eventos ofrecieron salud, esperanza, conexión y herramientas prácticas para trabajar activamente por la paz y la justicia.
- En 2022, el CCM celebró los 50 años de Thrift. En julio, MCC East Coast unió las ventajas de comprar artículos de segunda mano y montar en bicicleta organizando una serie de recorridos en bicicleta “Tour de Thrift” en la localidad de Lancaster (Pensilvania). La serie de recorridos tenía como objetivo inspirar las compras, las donaciones y el voluntariado en las tiendas de segunda mano (Thrift) del CCM, a la vez que se recaudaban fondos para el CCM
- Gracias por su trabajo y apoyo a los centros de venta de artículos de auxilio y recursos materiales del CCM.



El CCM y sus colaboradores en Ucrania continúan atendiendo las necesidades en medio de la guerra. La foto muestra un cohete sin detonar en el jardín de una casa destruida en la región de Chernihiv. “La gente tiene inmensas necesidades en este momento—alimentos, agua, refugio—que estamos trabajando para afrontar”, dijo Blaine

Derstine, reciente representante interino del CCM en Ucrania. “E incluso con el poco claro futuro en Ucrania, también tenemos que estar pensando a largo plazo, qué necesidades tendrá la gente si y cuando empiecen a regresar a Ucrania”. Oren por el pueblo y los líderes de Ucrania y Rusia.

Foto cortesía de Mikhailuk Maya



The Potter's House

ADDICTION RECOVERY & DISCIPLESHIP MINISTRY

It has been another year of significant growth both for our students and for the ministry. We have implemented the Trauma Healing Ministry to assist our students in getting to the roots of the problems that have resulted in their addiction. They are finding renewed freedom in Christ and a new perspective on life.

We have also completed the construction of the second residence on the Still Waters property providing us the space to expand.

■ OUR MISSION

The Potter's House is a safe place for men and women to recover from addiction, to experience Christ-centered discipleship, and embrace their God-given destiny for their lives.

65% Average capacity of Men and Women in the residential program

70% **Referral Sources**
Lancaster County Prison/SCI's

30% Community/Church

5 Total program Graduates

8 **Ethnicity**
African American

4 Hispanic

1 Other



Pray with us for our students as they seek to overcome the throes of addiction.



Support the joy of supporting this life transforming ministry with others.



Empower this work by your donation toward the operating fund.



Join our team as a volunteer and help provide a safe space for addiction recovery and discipleship.